

Oxyjet

Oxyjet is an open oxygen input system which is put directly into the pond or channel. The system is ideal for use in recirculation complexes where the water must be circulated anyway. Then **Oxyjet** circulates the water and enriches it with oxygen at the same time. **Oxyjet** can be used wherever there is a hydraulic pressure head of at least 60cm.

The outstanding performance of **Oxyjet** is due to patented special jets. Compared to conventional jets, a very high gas transfer is achieved. The jets result in a very high bubble detention time in the mixing chamber, and therefore a very high effectiveness and efficiency.

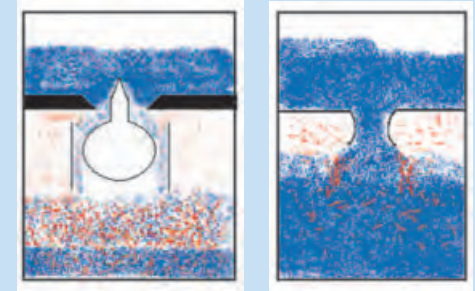


Oxyjet Type 02 + 03



Oxyjet mounted in the pond

According to the flow to be enriched with oxygen, **Oxyjet** is fitted with a suitable number of jets. Furthermore, **Oxyjet** is flexible for times of low flow – plugs are supplied to block jets to reduce the flow capacity. If the water flow increases temporarily, there is an overflow, that bypasses the jet system.



Left: LINN mixing jet

Right: conventional systems

Oxyjet offers effective oxygen enrichment without energy or maintenance costs.

Technical

	Type 01	Type 02	Type 03	Type 05	Type 06	
no. of mixing jets	1	2	3	1	1	
Minimum water flow	l/s	15	30	45	2	4
O ₂ enrichment max.	l/min	10	20	30	1.5	3
Dimensions	cm	ø40 H 160	square 85 x 60 x 175	ø20 H 125		